



TREBLE CLEF

A symbol that assigns the second line of the staff to the note G (specifically G₄). It is used for higher-pitched parts like right-hand piano, violin, flute. Also called the G clef because it “wraps around” the G line.



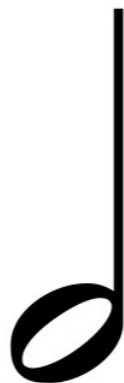
BASS CLEF

A symbol that assigns the fourth line of the staff to the note F (F₃). It is used for lower-pitched parts like left-hand piano, cello, bassoon. Also called the F clef because it centers on F.



WHOLE NOTE
(Semibreve)

A hollow oval notehead with no stem. It lasts 4 beats in common (4/4) time. It is the longest of the basic note values.



HALF NOTE
(Minim)

A hollow oval with a vertical stem. It lasts 2 beats in 4/4 time, which is half as long as a whole note.



QUARTER NOTE
(Crotchet)

A filled (black) oval with a stem. It lasts 1 beat in 4/4 time. This is the standard "one-beat" note in common time.



EIGHTH NOTE
(Quaver)

A filled oval with a stem and one flag (or one beam if connected). It lasts $\frac{1}{2}$ a beat in 4/4 time, half the duration of a quarter note



WHOLE REST
(Semibreve Rest)

A small filled rectangle hanging from the second staff line. It means silence for 4 beats (the length of a whole note) in 4/4 time. A whole rest filling an entire bar.



HALF REST
(Minim Rest)

A small filled rectangle sitting on the middle line of the staff. It means silence for 2 beats (the length of a half note) in 4/4 time



QUARTER REST
(Crotchet Rest)

A squiggly symbol (looks like a stylized "3" or lightning bolt). It means silence for 1 beat (the length of a quarter note) in 4/4 time



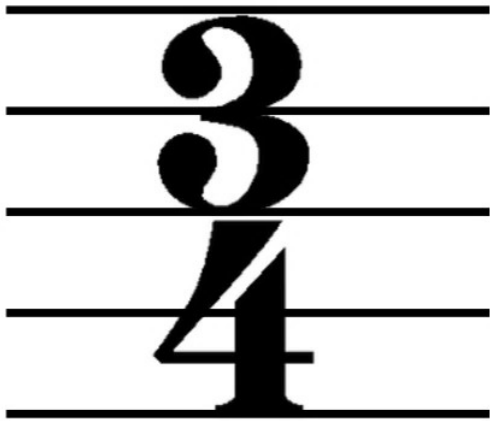
EIGHTH REST
(Quaver Rest)

A symbol resembling a slanted line with a flag (like a stylized "7"). It means silence for 1/2 a beat (the length of an eighth note) in 4/4 time



TIME SIGNATURE 4/4
("Four-Four" time)

The upper 4 means 4 beats per measure, and the lower 4 means the quarter note gets one beat. This is common time.



TIME SIGNATURE 3/4
("Three-Four" time)

The upper 3 means 3 beats per measure, and the lower 4 means the quarter note gets one. Commonly used in waltzes.



COMMON TIME

(C)

A symbol "C" that is shorthand for 4/4 time (i.e. 4 quarter-note beats per measure). It tells you the music is in 4/4 ("common") time.



SHARP

A symbol that raises a note by one semitone (half step). (For example, C# is a half step higher than C.) It's placed before a note to make it sharp.



NATURAL

A symbol that cancels a previous sharp or flat, restoring the note to its original (natural) pitch. (For example, if F # is in effect, ♮ B would make it B ♮ .)



FLAT

A symbol
A symbol that lowers a note by one semitone. (For example, B ♭ is a half step lower than B.) It's placed before a note to make it flat.

p

PIANO

A dynamic marking meaning "soft" or "quiet." Play quietly when you see "p".

mp

MEZZO PIANO

A dynamic marking meaning "moderately soft" (literally "medium quiet").

mf

MEZZO FORTE

A dynamic marking
meaning
"moderately loud"
(literally "medium
loud").

f

FORTE

A dynamic marking
meaning "loud" or
"strong." Play loudly
when you see "f"